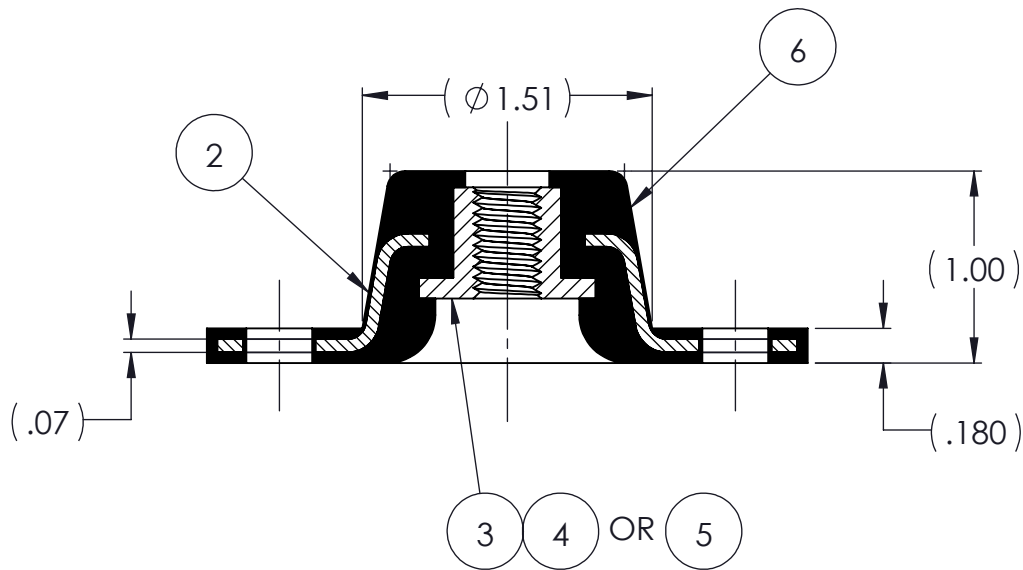
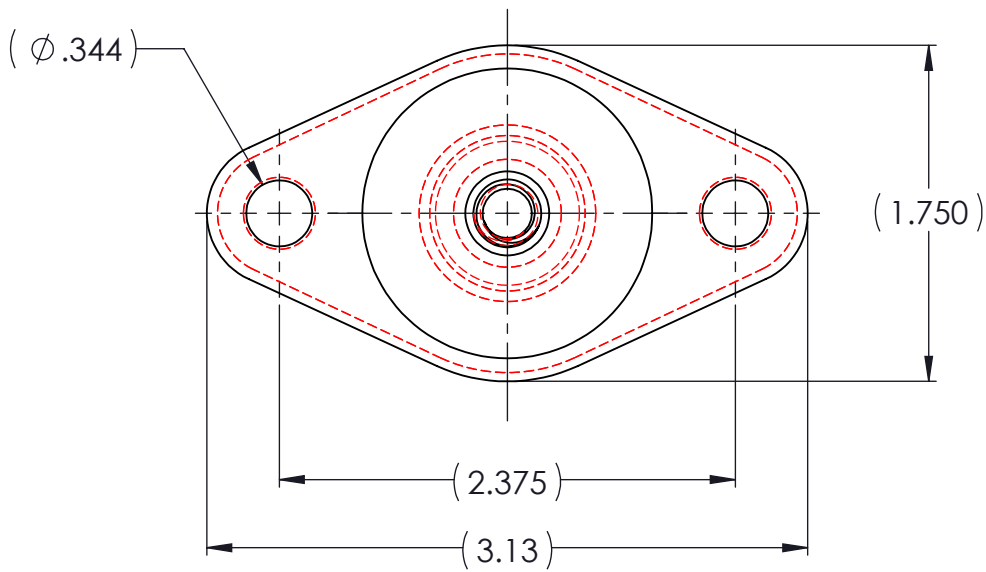


REVISIONS			
REV.	DESCRIPTION	DATE	APPROVED
1	INITIAL RELEASE OF DRAWING	12/26/2014	BS
2	REVISE NOTE 1 TO INCLUDE 30 DUROMETER ELASTOMER.	1/2/2015	BS



AR	ELASTOMER	K635-6		6
1	MK3650I-NT	MK6350I-NT		5
1	MK6350I-M8	MK6350I-M8		4
1	MK6350I	MK6350I		3
1	MK6350B	MK6350B		2
	K635	K635		1
QTY.	DESCRIPTION	PART NUMBER	MATERIAL OR NOTES	ITEM

		TITLE: K635 SERIES VIBRO-INSULATOR WWW.KARMAN.COM		
		SIZE: B	CAGE CODE	REV: 2
DO NOT SCALE DRAWING		SCALE: 1:1	WEIGHT: N/A	SHEET 1 OF 1

NOTES:

- MATERIAL: ELASTOMER AND DUROMETER OF 30, 40, 50, 60 OR 70 TO BE SPECIFIED.
- 2 ALL DIMENSIONS ARE REFERENCE.
- 3 AVAILABLE WITH THREADS OF 5/16-18 UNC, M8 X 1.25 OR UNTHREADED.

PROPRIETARY AND
CONFIDENTIAL
THE INFORMATION
CONTAINED IN THIS
DRAWING IS THE SOLE
PROPERTY OF
KARMAN RUBBER. ANY
REPRODUCTION IN PART
OR AS A WHOLE
WITHOUT THE WRITTEN
PERMISSION OF
KARMAN RUBBER
IS PROHIBITED.

SIGNATURE		DATE
DRAWN	B. SENECAI	12/26/2014
CHECK	S. BROWN	12/26/2014
ENGR	B. SENECAI	12/26/2014
QA		
STRESS		
APPR		

UNLESS OTHERWISE SPECIFIED:
DIMENSIONS ARE IN INCHES
TOLERANCES:
.X =
.XX = ± 0.031
.XXX =
ANGLES = ± 1°
INTERPRET GEOMETRIC
TOLERANCING PER:
ASME Y14.5M-1994